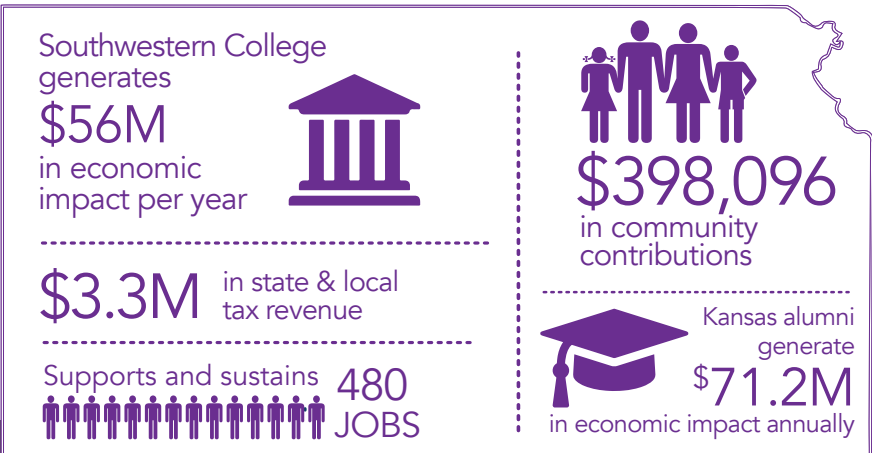




SOUTHWESTERN COLLEGE

BUILD A FUTURE | BUILD COMMUNITY | BUILD ACHIEVEMENT

Southwestern College is a private, independent college offering four-year and graduate degree programs in Winfield, Kansas, and in Wichita through its professional studies program. Among the many traditions established since Southwestern College's founding in 1885, none is more critical than that of the individual attention and deep support given to each student who attends. No one is underestimated at Southwestern College – and faculty and staff involvement make it their mission to ensure that each student succeeds. Strong ties and an extensive alumni leadership presence in the Winfield area foster partnerships between the College and area businesses, industries, hospitals, and organizations, giving students countless opportunities to pursue their interests hands-on and opening new worlds of possibility. With its many unique gifts, Southwestern College stands as a dynamic, diverse and engaged community, providing tangible and intangible value for South-Central Kansas and beyond.



Contributing to the Economy

The combined economic contribution of Southwestern College in 2021 was \$56 million. This includes a direct impact of nearly \$33.2 million and indirect/induced impact of \$22.8 million. Operational and capital spending in Kansas generated \$46.1 million of the total impact, and \$ 9.9 million in impact was generated from student and visitor spending in 2021.

Supports and Sustains Jobs

As a result of operations, student spending and visitor spending, Southwestern College supports 480 jobs (345 direct and 135 indirect/induced). Southwestern College employs 251 people.

Contributes to the State and Local Tax Base

In 2021, Southwestern College, its suppliers, students and visitors contributed an estimated \$3.3 million in state and local taxes through spending in the local and statewide economy. Of this \$3.3 million, over \$1.4 million was generated in local taxes only.



Alumni Continue to Contribute to Kansas

Many Southwestern College alumni are leaders and employees in the Winfield area and in communities throughout Kansas. Nearly 8,000 alumni living and working in Kansas are continuing to make a positive economic impact after graduation. Southwestern College graduates are an integral part of the workforce of Kansas and impact the economy over their careers through their spending and the extra earning power from earning a Southwestern College degree. Each year, Southwestern College alumni generate \$71.2 million in economic output for the Kansas community, support and sustain 447 jobs and contribute \$4.4 million in state and local taxes. These impacts are based on the added value of earning a degree or credential from Southwestern College, not alumni full wages.

Mission to Serve and Give Back

Southwestern College's mission extends beyond campus. Through organized programs or by just being a good neighbor, students, faculty and staff give back to Winfield and other local communities regularly. Overnight camps, performing arts events and cultural programs introduce many visiting middle school and high school students to a future and possibility that higher education is for them – many, the first generation in their family. The Southwestern College community is active in Rotary International, Big Brothers Big Sisters, community clean up days and assisting older community members with yardwork, among other activities.

Based upon assumptions derived from the U.S. Census Bureau and the Points of Light Foundation regarding donation amounts and volunteerism rates by age, income level and employment status, it is estimated that staff, faculty and students give \$170,066 annually in charitable donations and volunteer for an estimated 18,984 hours, valued at \$228,030. In 2021, the combined impact of charitable giving and volunteerism totaled \$398,096. These benefits were in addition to the \$56 million in annual economic impact.



“Southwestern College is a supportive community of teachers and learners who not only want to explore ideas, but who want to do the work to make the world a better place.”

— Elizabeth Frombgen, PhD
President, Southwestern College

Southwestern Student Profile

1,282



students enrolled

87.4%



student athletes

32.9%

of students from Kansas

22.5%



first generation to attend college

23+



majors offered

47.2%



Pell Grant eligible

SOUTHWESTERN
COLLEGE



Kansas Independent College Association

prepared by

Parker Philips
assess. analyze. assert.